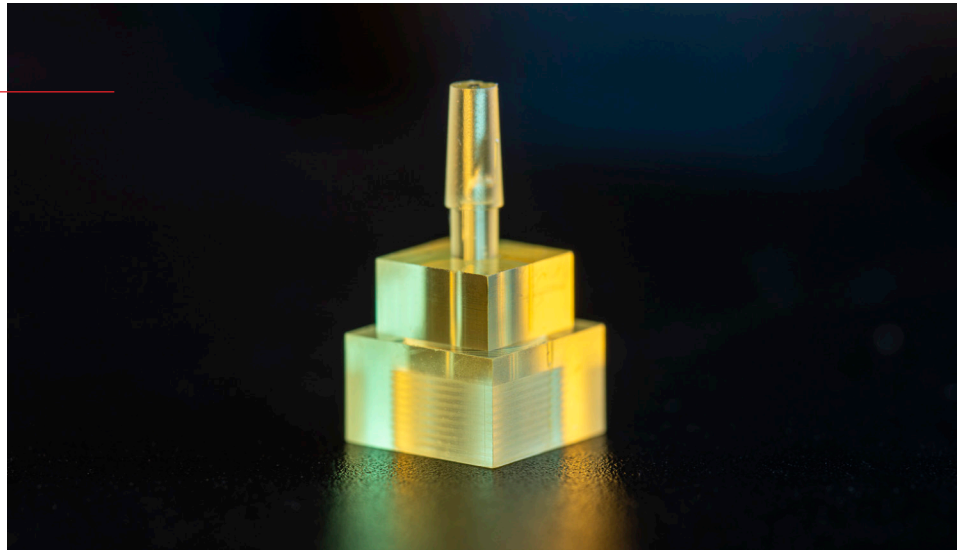


# ST1400 Resin

ST1400 offers high toughness and elongation for applications requiring high flexibility such as snap-fits.



|                    |                              | Cured Parts                               | Standard   |
|--------------------|------------------------------|---|------------|
| Tensile Properties | TENSILE STRENGTH             | 45 MPa                                    | ASTM D638  |
|                    | ELASTIC MODULUS              | 1900 MPa                                  | ASTM D638  |
|                    | ELONGATION AT BREAK          | 43%                                       | ASTM D638  |
|                    | ELONGATION AT YIELD          | 5.5%                                      | -          |
| Thermal Properties | CTE @ 60C                    | 111 $\mu\text{m}/\text{m}/^\circ\text{C}$ | -          |
|                    | HDT @ 0.45MPa                | 57°C                                      | -          |
| General Properties | CONTACT ANGLE                | 30°-60°                                   | ASTM D7334 |
|                    | WATER ABSORPTION (24h)       | 0.33%                                     | ASTM D570  |
|                    | DIELECTRIC CONSTANT (10 GHz) | 3.1                                       | -          |
|                    | HARDNESS                     | 78 Shore D                                | ASTM D785  |
|                    | VISCOSITY                    | 280 cP                                    | -          |
|                    | STANDARD COLOR               | Yellow trans                              | -          |
|                    | COMPATIBLE BMF SYSTEMS       | S350, S140, S240                          | -          |

<sup>1</sup> Final properties are dependent on print conditions, post-processing operations, and part geometry.

<sup>2</sup> Test samples were UV cured and heat cured.